

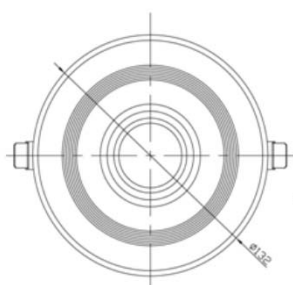
LED Down Light - 04

Data Specification:

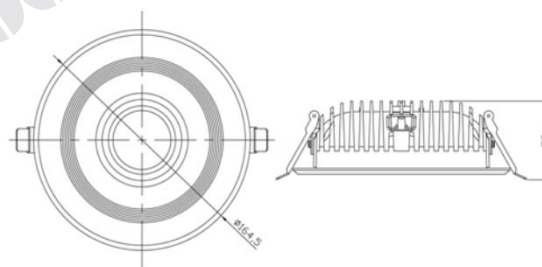


Performance & parameter of product

Model No.	Part Number	OT0435-8W	OT0440-10W
Structure parameter	Dimension	Φ132*56mm	Φ165*58mm
	Cut-out	Φ120mm	Φ150mm
Performance parameter	Lamp	Warm white/Natural white/Cool white	
	Lumen (lm)	508lm/550lm/600lm	
	Color temperature (K)	3000K/4200K/6500K	
	CRI	≥70	
	Type of LED	COB LED	
	Beam angle	92°	98°
	Decay rate (%)	less than 3% within 1000 working hours	
	Total power (W)	9-11W	
	Lifespan (Hrs)	≥30000Hrs	
	High voltage testing	1750Vac/1min	
LED parameter	Lighting efficiency	100LM/W	
	Chip quantity	50PCS	
	series-parallel way	5S10P	
	Voltage	15-17VDC	
	Current	500mA	
Driver parameter	Input parameter	100~240VAC · 50/60Hz	
	Power factor	0.8	
	Output parameter	9-18VDC,500mA	18-24VDC,500mA
Structure parameter	Material	Cast-Aluminium	
	Protection class	class I	
	Ingress Protection	IP20	
Environment parameter	Application	Hotel,Home-lighting,Recreation place,Supermarket,Office building.	
	Operating temperature	-25℃ ~ 50℃ · 10% ~ 90% R.H.	
	Storage temperature	-30℃ ~ 85℃ · 0% ~ 95% R.H.	
Packing specification	Qty/Ctn	Carton Size	
	20PCS/Ctn	33.5x32.5x42.5 cm	42.5x38.9x46 cm



OT0435-8W



OT0440-10W

* Others data not in the specification of data, please contact us.

如果你要求的規格參數不在本規格書裡表現出來請與我們聯絡。