

Test Report

No. EC406644300

Date: Aug 20 2007

Page 1 of 3

MAYLOON ELECTRONIC CO.,LTD
FLAT E, 17/F., HOUSTON IND. BLDG.,
32-40 WANG LUNG STREET,
TSUEN WAN
N.T.
HONG KONG

The following sample was submitted and identified on behalf of the client as :
CHIP SWITCHING DIODE : CD4148WTP/CD4148WSP/CD4148WP/HSD4148

SGS Job No.	:	1102162
Supplier	:	MAYLOON ELECTRONIC CO., LTD.
Manufacturer	:	MAYLOON ELECTRONIC CO., LTD.
Country of Origin	:	TAIWAN
Date of Sample(s) Received	:	AUG 07 2007
Testing Period	:	AUG 07 -13 2007
Test Requested/ Test Method	:	<ul style="list-style-type: none"> - In accordance with RoHS Directive 2002/95/EC, and its amendment directives. - With reference to EPA Method 3051A/ 3052 for Cadmium, Lead and Mercury contents. Analysis was performed by ICP. - With reference to EPA Method 3060A & 7196A for Hexavalent Chromium content. Analysis was performed by colorimetric method (UV-VIS). - With reference to EPA Method 3550C/ 3540C for PBBs/ PBDEs contents. Analysis was performed by GC-MS.
Test Results	:	Please refer to next page.
Conclusion	:	<ul style="list-style-type: none"> - Based on the performed tests on submitted sample, the results comply with the RoHS Directive 2002/95/EC and its subsequent amendments.

Signed for and on behalf of
SGS Hong Kong Ltd.



Ho Ka Ting Family
Senior Laboratory Executive

This document is issued by the Company subject to its General Conditions of Service printed overleaf or available on request and accessible at www.sgs.com. Attention is drawn to the limitations of liability, indemnification and jurisdictional issues defined therein. Unless otherwise stated: (a) the results shown in this document refer only to the sample(s) tested and (b) such sample(s) are retained for 30 days only. This document cannot be reproduced except in full, without prior approval of the Company. Any unauthorized alteration, forgery or falsification of the content or appearance of this report is unlawful and offenders may be prosecuted to the fullest extent of the law.

Test Report

No. EC406644300

Date: Aug 20 2007

Page 2 of 3

Test Results:

Test results by chemical method (Unit : mg/kg)

	<u>1</u>	<u>MDL</u>	<u>Limit</u>
Cadmium (Cd)	n.d.	2	100
Lead (Pb)	6	2	1000
Mercury (Hg)	n.d.	2	1000
Hexavalent Chromium (CrVI) by colorimetric method	n.d.	2	1000
Sum of PBBs (Mono to Deca)	n.d.	-	1000
Monobromobiphenyl	n.d.	5	
Dibromobiphenyl	n.d.	5	
Tribromobiphenyl	n.d.	5	
Tetrabromobiphenyl	n.d.	5	
Pentabromobiphenyl	n.d.	5	
Hexabromobiphenyl	n.d.	5	
Heptabromobiphenyl	n.d.	5	
Octabromobiphenyl	n.d.	5	
Nonabromobiphenyl	n.d.	5	
Decabromobiphenyl	n.d.	5	
Sum of PBDEs (Note 4)	n.d.	-	1000
Sum of PBDEs (Mono to Deca)	n.d.	-	
Monobromodiphenyl ether	n.d.	5	
Dibromodiphenyl ether	n.d.	5	
Tribromodiphenyl ether	n.d.	5	
Tetrabromodiphenyl ether	n.d.	5	
Pentabromodiphenyl ether	n.d.	5	
Hexabromodiphenyl ether	n.d.	5	
Heptabromodiphenyl ether	n.d.	5	
Octabromodiphenyl ether	n.d.	5	
Nonabromodiphenyl ether	n.d.	5	
Decabromodiphenyl ether	n.d.	5	

Note :

- (1) mg/kg = ppm
- (2) MDL = Method Detection Limit
- (3) n.d. = Not Detected
- (4) Sum of Mono to NonaBDE & according to 2005/717/EC DecaBDE is exempt.
- (5) - = Not Regulated
- (6) -- = Not Conducted

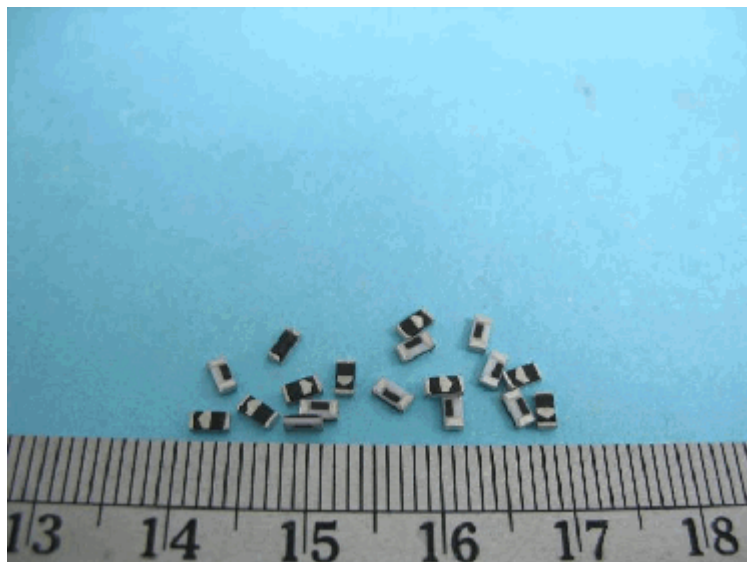
Sample Description

1 White Ceramic w/ Black and White Printing w/ Silvery Metal

This document is issued by the Company subject to its General Conditions of Service printed overleaf or available on request and accessible at www.sgs.com. Attention is drawn to the limitations of liability, indemnification and jurisdictional issues defined therein. Unless otherwise stated: (a) the results shown in this document refer only to the sample(s) tested and (b) such sample(s) are retained for 30 days only. This document cannot be reproduced except in full, without prior approval of the Company. Any unauthorized alteration, forgery or falsification of the content or appearance of this report is unlawful and offenders may be prosecuted to the fullest extent of the law.

Sample photo:

EC406644300 (Sample 1)



SGS authenticate the photo on original report only

*** End Of Report ***