



小型繞線壓模式貼片電感
Range: 0.1 μ H ~ 1000 μ H

TYPE: NL453232 Series
SMD Wirewound Chip Molded Inductor

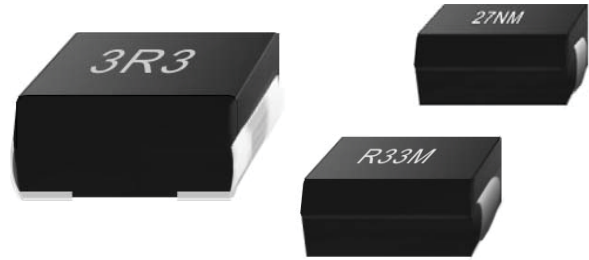
Feature (特性)

- ◆ High resistance to heat and humidity.
(高抗熱及濕度)
- ◆ Resistant to mechanical shocks and pressures.
(對於機械衝擊或壓力有良好之抵抗力)

Application (用途)

Notebook Computer, Disc Drive Unit(CD/DVD),
Inkjet Printer, Hard Disk Drive, Copying Machine,
Display Monitor, Gaming Machine, Color TV,
Video Tape Recorder, DVD Player, Video Camera,
Digital Still Camera, Car Electronics, Lowest EMI.

Figure:



(筆記型電腦、磁片驅動裝置、噴墨印表機、硬碟磁碟機、影印機、顯示監視器、遊戲機、彩色電視、錄放影機、光碟機、攝影機、數位相機、汽車電子產品、防干擾對策)

ORDERING INFORMATION

Example: NL453232-R10M

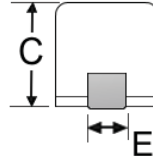
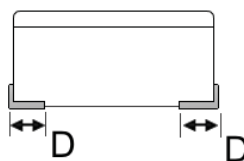
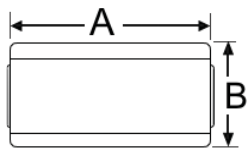
Type	Size	Inductance	Tolerance		Packing
NL252018-01	2.5x2.0x1.8	Ref.	H= \pm 3%	A= \pm 0.1nH	T=Taping
NL252018-02	2.5x2.0x1.8		J= \pm 5%	B= \pm 0.2nH	B=Bulk
NL322522	3.2x2.5x2.2		K= \pm 10%	C= \pm 0.3nH	
NL453232	4.5x3.2x3.2		M= \pm 20%		
NL565050	5.6x5.0x4.0				

DIMENSION

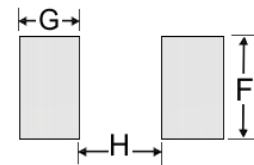
Unit: in mm

Type	A	B	C	D	E	F	G	H	I
NL252018-01	2.5 \pm 0.3	2.0 \pm 0.2	1.8 \pm 0.2	0.3(min)	1.4 \pm 0.1	1.5	1.0	1.5	---
NL252018-02	2.5 \pm 0.3	2.0 \pm 0.2	1.8 \pm 0.2	0.3(min)	1.4 \pm 0.1	1.5	1.0	1.5	---
NL322522	3.2 \pm 0.3	2.5 \pm 0.2	2.2 \pm 0.2	0.6(Ref.)	1.0(Ref.)	1.5	1.0	1.8	---
NL453232	4.5 \pm 0.3	3.2 \pm 0.2	3.2 \pm 0.2	1.0(Ref.)	1.2(Ref.)	1.6	1.5	2.2	---
NL565050	5.6 \pm 0.3	5.0 \pm 0.3	4.0 \pm 0.3	2.0	4.0	4.5	1.1	4.0 \pm 0.2	0.7 \pm 0.1

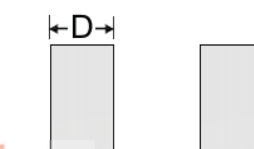
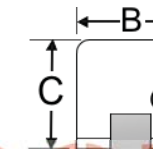
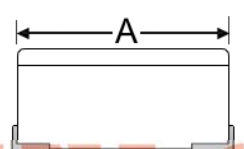
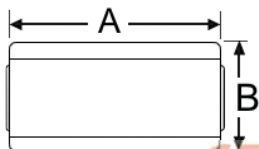
NL252018-01
NL252018-02
NL322522
NL453232



Land Pattern



NL565050



Inductance Range:

Type	Size	Inductance Range
NL252018-01	2.5x2.0x1.8	10nH ~ 100 nH
NL252018-02	2.5x2.0x1.8	1.0 μ H ~ 33 μ H
NL322522	3.2x2.5x2.2	0.1 μ H ~ 100 μ H
NL453232	4.5x3.2x3.2	0.1 μ H ~ 1000 μ H
NL565050	5.6x5.0x4.0	1.0 μ H ~ 10000 μ H

Land Pattern



SINLOON®

小型繞線壓模式貼片電感

Range: 0.1μH~1000μH

TYPE: NL453232 Series

SMD Wirewound Chip Molded Inductor

Standard Electrical Specifications NL453232 (1812) Series Chip Inductor

Part Number NL453232(1812) 產品料號	Inductance (μH) 電感值(L)	Tolerance (%) 誤差	Q (min) 品質因數	Frequency (MHz) 測試頻率	SRF(MHz) (min) 共振頻率	DCR(Ω) (max) 直流阻抗	IDC(mA) (max) 定格電流
NL453232-R10M	0.10	±20%	35	25.2	300	0.18	800
NL453232-R12M	0.12	±20%	35	25.2	280	0.2	770
NL453232-R15M	0.15	±20%	35	25.2	250	0.22	730
NL453232-R18M	0.18	±20%	35	25.2	220	0.24	700
NL453232-R22M	0.22	±20%	40	25.2	200	0.25	665
NL453232-R27M	0.27	±20%	40	25.2	180	0.26	635
NL453232-R33M	0.33	±20%	40	25.2	165	0.28	605
NL453232-R39M	0.39	±20%	40	25.2	150	0.3	575
NL453232-R47M	0.47	±20%	40	25.2	145	0.32	545
NL453232-R56M	0.56	±20%	40	25.2	140	0.36	520
NL453232-R68M	0.68	±20%	40	25.2	135	0.4	500
NL453232-R82	0.82	±20%	40	25.2	130	0.45	475
NL453232-1R0K	1.0	±10%	50	7.96	100	0.5	450
NL453232-1R2K	1.2	±10%	50	7.96	80	0.55	430
NL453232-1R5K	1.5	±10%	50	7.96	70	0.6	410
NL453232-1R8K	1.8	±10%	50	7.96	60	0.65	390
NL453232-2R2K	2.2	±10%	50	7.96	55	0.7	380
NL453232-2R7K	2.7	±10%	50	7.96	50	0.75	370
NL453232-3R3K	3.3	±10%	50	7.96	45	0.8	355
NL453232-3R9K	3.9	±10%	50	7.96	40	0.9	330
NL453232-4R7K	4.7	±10%	50	7.96	35	1.0	315
NL453232-5R6K	5.6	±10%	50	7.96	33	1.1	300
NL453232-6R8K	6.8	±10%	50	7.96	27	1.2	285
NL453232-8R2K	8.2	±10%	50	7.96	25	1.4	270
NL453232-100K	10	±10%	50	2.52	20	1.6	250
NL453232-120K	12	±10%	50	2.52	19	2	225
NL453232-150K	15	±10%	50	2.52	17	2.5	200
NL453232-180K	18	±10%	50	2.52	15	2.8	190
NL453232-220K	22	±10%	50	2.52	13	3.2	180
NL453232-270K	27	±10%	50	2.52	12	3.6	170
NL453232-330K	33	±10%	50	2.52	11	4.0	160
NL453232-390K	39	±10%	50	2.52	10	4.5	150
NL453232-470K	47	±10%	50	2.52	10	5.0	140
NL453232-560K	56	±10%	50	2.52	9.0	5.5	135
NL453232-680K	68	±10%	50	2.52	9.0	6.0	130
NL453232-820K	82	±10%	50	2.52	8.0	7.0	120
NL453232-101K	100	±10%	40	0.796	8.0	8.0	110
NL453232-121K	120	±10%	40	0.796	6.0	8.0	110
NL453232-151K	150	±10%	40	0.796	5.0	9.0	105
NL453232-181	180	±10%	40	0.796	5.0	9.5	102
NL453232-221K	220	±10%	40	0.796	4.0	10	100
NL453232-271K	270	±10%	40	0.796	4.0	12	92
NL453232-331K	330	±10%	40	0.796	3.5	14	85
NL453232-391K	390	±10%	40	0.796	3.0	18	80
NL453232-471K	470	±10%	40	0.796	3.0	26	62
NL453232-561K	560	±10%	30	0.796	3.0	30	50
NL453232-681K	680	±10%	30	0.796	3.0	30	50
NL453232-821K	820	±10%	30	0.796	2.5	35	30
NL453232-102K	1000	±10%	20	0.252	2.5	40	30

※Operating Temp: -30℃ ~ +100℃

※Inducrance drop = 10% type at IDC



SINLOON®

小型繞線壓模式貼片電感
Range: 0.1μH~1000μH

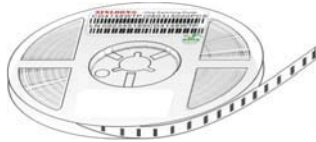
TYPE: NL453232 Series

SMD Wirewound Chip Molded Inductor

PACKING

Type	Size	Tape Reel Size	Quantity (ea)		
NL252018-01	2.5x2.0x1.8	178 mm	2,000/Reel	20K / Inner Box	120K / Carton
NL252018-02	2.5x2.0x1.8	178 mm	2,000/Reel	20K / Inner Box	120K / Carton
NL322522	3.2x2.5x2.2	178 mm	2,000/Reel	20K / Inner Box	120K / Carton
NL453232	4.5x3.2x3.2	178 mm	500/Reel	5K / Inner Box	30K / Carton
NL565050	5.6x5.0x4.0	330 mm	1000/Reel	3K / Inner Box	45K / Carton

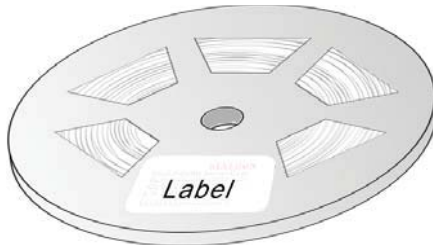
Tape Reel



178mm



Inner Box



330mm



Carton Pack

SINLOON®

※美隆公司產品規格及其特性參數的改變或更新恕不另行通知。

※Mayloon characteristic parameters of electronic product specification changes or updates without notice to improve。

