

方形平板燈系列 LED Panel Lighting

SINLOON®

超薄節能導光燈

Ultra-thin energy saving light guide light

CT-F606021-13 (22W/1600lm)

產品特點:

光源: LED SMD5630 CHIP DIODE

外型尺寸: 超薄設計 10.9mm.

電源: 市電(寬壓) 外置恆流電源.

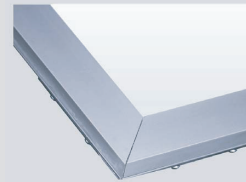
導光面板: 專利導光透鏡, 節能 >60%.

安裝: 可替代相同規格的天花板燈, 安裝容易安全.

外框採用銀灰色金屬鋁質, 有圓角或直角可供選擇,
外置高功率高效恆流電源, 瞬間啟動, 無頻閃, 具備認證.

應用場所:

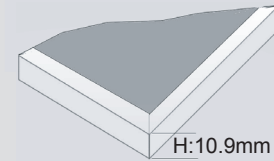
廣泛應於商場店舖, 酒店, 展廳, 商場走廊等地方.



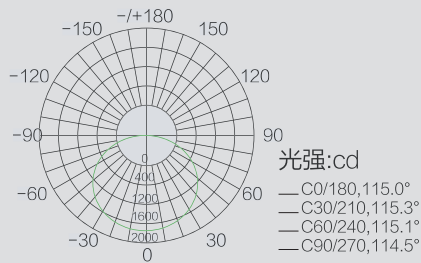
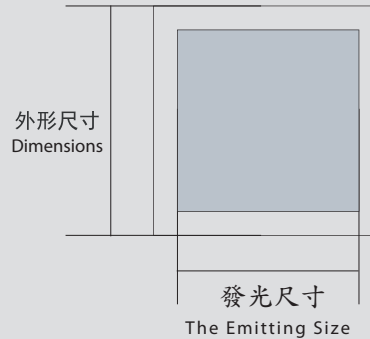
Silver-gray Aluminum frame



#6060



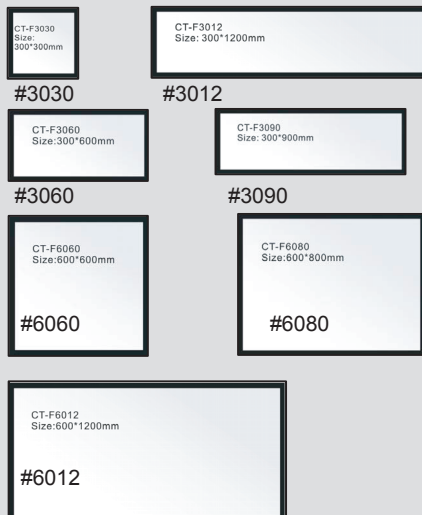
H:10.9mm



平均光束角 (50%) : 115.0°

不同尺寸比較

Comparison of different size:



Characteristic Parameters:

型號 Model:	CT-F606021-13
尺寸 Dimension (L*W*H):	595*595*10.9mm
發光尺寸 The Emitting Size:	557*557mm
輸入電壓 Input Voltage (High efficiency):	AC110V~240V 50/60Hz
輸出電壓 Output Voltage:	32V/DC
電流 Current:	0.6A
類型 LED Type:	SMD-5630
數量 LED Quantity:	60pcs
功率 System Power (W):	22W ±5%
光通亮 LED Flux (lm):	1600lm ±5%
燈具效率 Lighting Factor:	75%
色溫 Color Temperature (K)	3000K ±7%; 6500K ±8%
顯色指數 Color Rendering Index:	>82
發光角度 Illumination Angle:	120°
壽命 Lifespan:	50000hrs
環境溫度 Ambient Temperature (°C):	-20°C ~ 50°C
重量 Weight (Kg):	<4.0/kg
認證 Certificate:	BSMI, CE, RoHS, FCC.

* If you have any question which is not in this specification , please contact us. (在本規格書裡如果您未能找到或參數指標未能達到你的應用要求, 即未在本規格書裡表現出來, 請與我們聯絡)