

SINLOON®

肖特基二極管
Case: TO-220

SB1020CT - SB10100CT
10A Dual Schottky Barrier Rectifier

Feature

- ◆ Schottky Barrier Chip
- ◆ Guard Ring for Transient Protection
- ◆ Low Forward Voltage Drop
- ◆ Low Reverse leakage Current
- ◆ High Surge Current Capability
- ◆ Plastic Material has UL Flammability Classification 94V-0

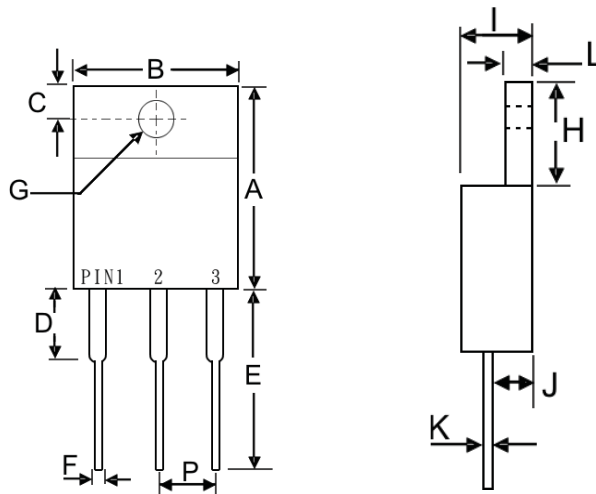
Mechanical Data

- ◆ Terminals: Plated Leads Solderable per MIL-STD-202, Method 208
- ◆ Polarity: See Diagram
- ◆ Weight: 2.24 grams (approx)
- ◆ Mounting Position: Any
- ◆ Mounting Torque: 11.5 cm·kg (10 in·lbs) max.
- ◆ Lead Free: For RoHS / Lead Free Version Add "-LF" Suffix to part Number.

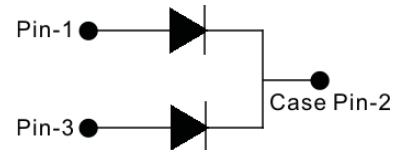
Dimension

Case: TO-220 (mm)

Dim.	Min.	Max.
A	13.9	15.9
B	9.8	10.7
C	2.54	3.43
D	3.56	4.56
E	12.7	14.73
F	0.51	0.96
G (Φ)	3.55	4.09
H	5.75	6.85
I	4.16	5.0
J	2.03	2.92
K	0.3	0.65
L	1.14	1.4
P	2.29	2.79

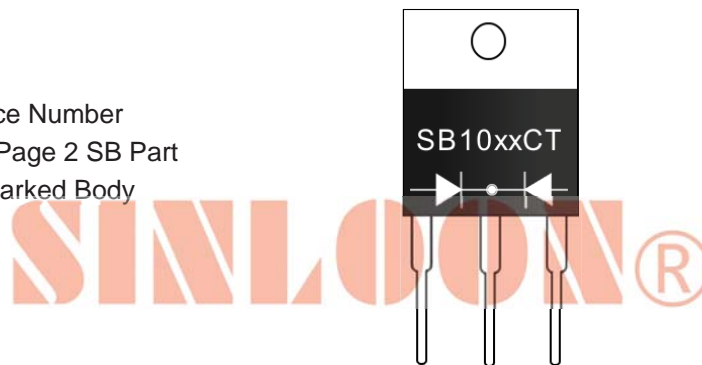


Figure



Marking Information

- SB10xxCT = Device Number
- xx = See Page 2 SB Part
- Polarity = As Marked Body



※美隆公司產品規格及其特性參數的改變或更新恕不另行通知。

※Mayloon characteristic parameters of electronic product specification changes or updates without notice to improve.

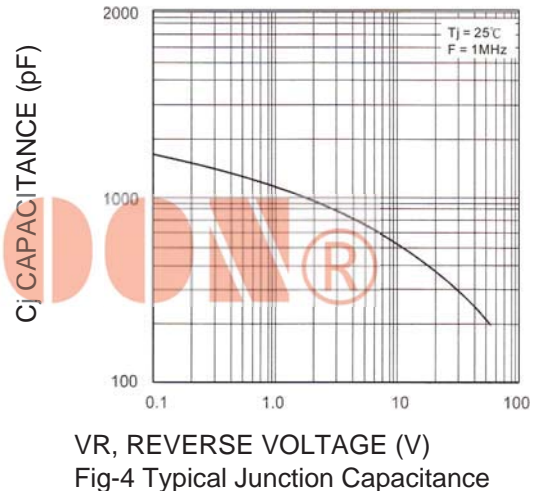
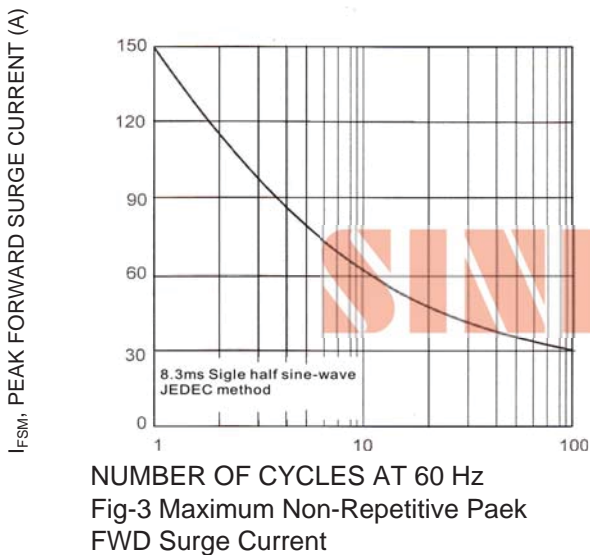
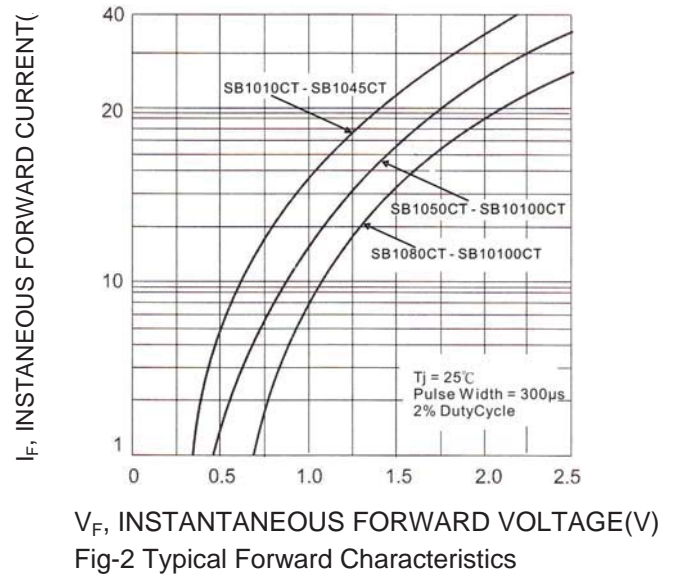
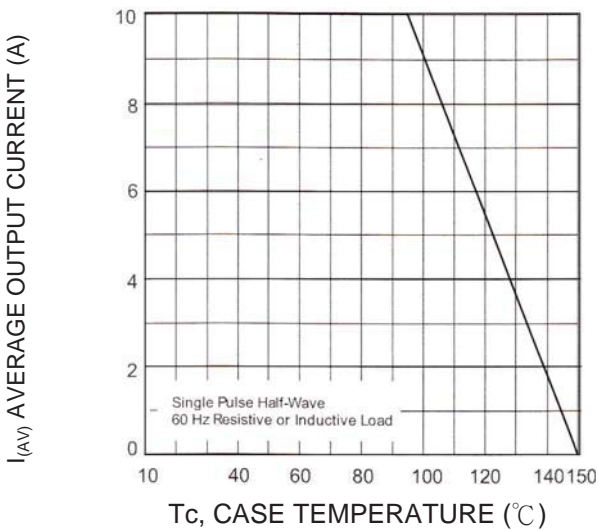


Maximum Ratings and Electrical Characteristics @T_A=25°C unless otherwise specified

Single Phase, half wave, 60Hz, resistive or inductive load For capacitive load, derate current by 20%.

Characteristics	Symbol	SB1020CT	SB1030CT	SB1040CT	SB1045CT	SB1050CT	SB1060CT	SB1080CT	SB10100CT	Unit
Peak Repetitive Reverse Voltage	V _{RRM}									V
Working Peak Reverse Voltage	V _{RWM}	20	30	40	45	50	60	80	100	V
DC Blocking Voltage	V _R									V
RMS Reverse Voltage	V _{R(RMS)}	14	21	28	32	35	42	56	70	V
Average Rectified Output Current @T _C =95°C	I _O	10	10	10	10	10	10	10	10	A
Non-Repetitive Peak Forward Surge Current 8.3ms Single half sine-wave superimposed on rated load (JEDEC)	I _{FSM}	150	150	150	150	150	150	150	150	A
Forward Voltage @I _F =5.0A	V _{FM}	0.55	0.55	0.55	0.55	0.75	0.75	0.85	0.85	V
Peak Reverse Current @T _A = 25°C	I _{RM}	0.5								mA
At Rated DC Blocking Vol. @T _A =100°C		50								
Typical Junction Capacitance (Note 1)	C _j	700								pF
Operating and Storage Temperature Range	T _j , T _{STG}	-65 to +150								°C

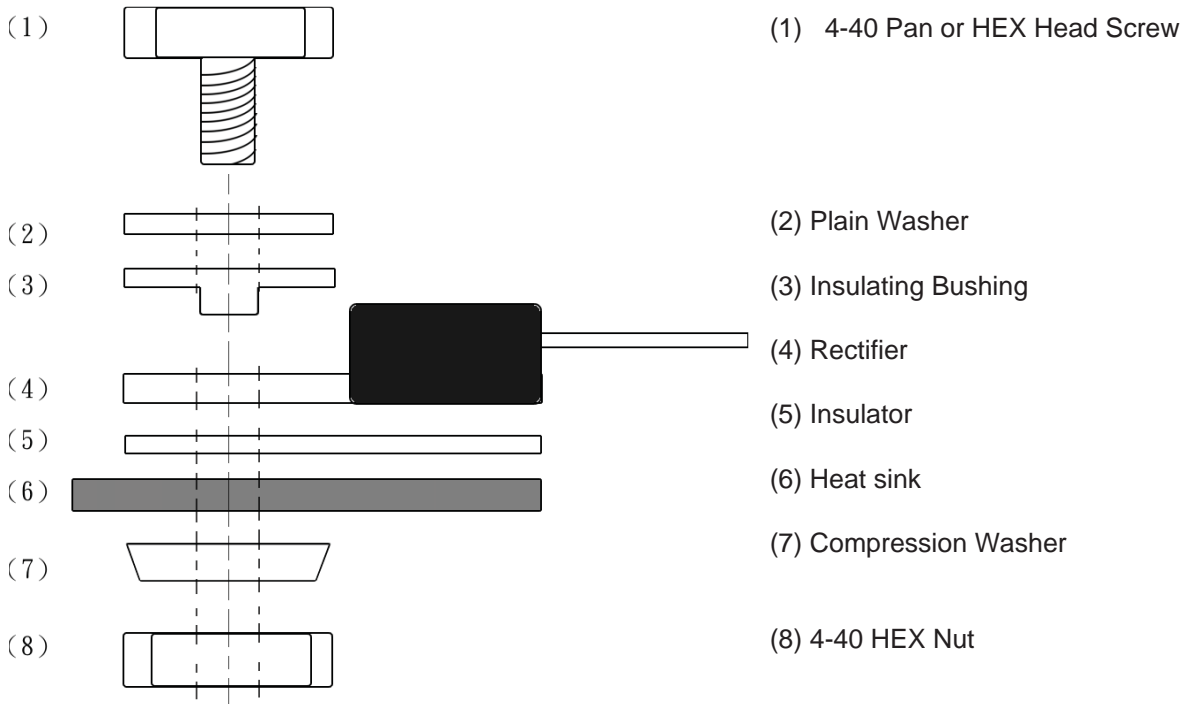
Note 1: Measured at 1.0 MHz and applied reverse voltage of 4.0V D.C.



Packaging Information

Tube Size LxWxH (mm)	Quantity (Pcs)	Inner Box Size LxWxH (mm)	Quantity (Pcs)	Carton Size LxWxH (mm)	Quantity (Pcs)	Gross Weight
525 x 31 x 6	50	555x145x95	2000	572x306x218	8000	19.0kg

Recommended Screw Mount Arrangement



◆ Recommended isolated mounting when screw is at heat sink potential 4-40 hardware is used.

◆ Screw should not be tightened with any type of air-forced torque or equipment that may cause high impact on device package. The insulating bushing inside the mounting hole will insure the screw threads do not contact the metal base.

◆ The interface should apply a layer of thermal grease or a highly conductive thermal pad for better heat dissipation



※美隆公司產品規格及其特性參數的改變或更新恕不另行通知。

※Mayloon characteristic parameters of electronic product specification changes or updates without notice to improve.

