

SINLOON®

肖特基二極管

SR22 - SR210 (20V~100V)

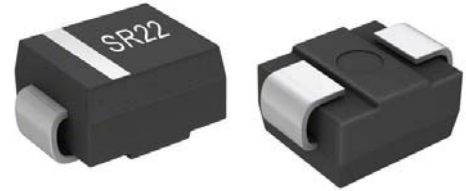
Case: SMA/DO-214AC

2.0A Surface Mount Schottky Barrier Diode

Feature

- ◆ Schottky Barrier Chip
- ◆ Ideally Suited for Automatic Assembly
- ◆ Guard Ring Die Construction for Transient Protection
- ◆ Surge Overload Rating to 50A Peak
- ◆ Low Power Loss, High Efficiency
- ◆ For Use in Low Voltage Application
- ◆ Plastic Case Material has UL Flammability Classification Rating 94V.

Figure



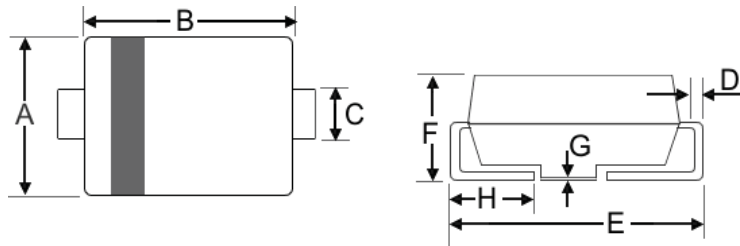
Mechanical Data

- ◆ Case: SMA/DO-214AC, Moldes Plastic
- ◆ Terminals: Solder Plated, Solderable per MIL-STD-750, Method 2026.
- ◆ Polarity: Cathode Band or Cathode Notch
- ◆ Weight: 0.064 grams (approx)
- ◆ Mounting : Type Number
- ◆ Lead Free: For **RoHS** / Lead Free Version Add "-LF" Suffix to part Number.

Dimension

Case: SMA/DO-214AC (mm)

Dim	Min	Max
A	2.5	2.9
B	4.0	4.6
C	1.2	1.6
D	0.152	0.305
E	4.8	5.28
F	2.0	2.44
G	0.051	0.203
H	0.76	1.52

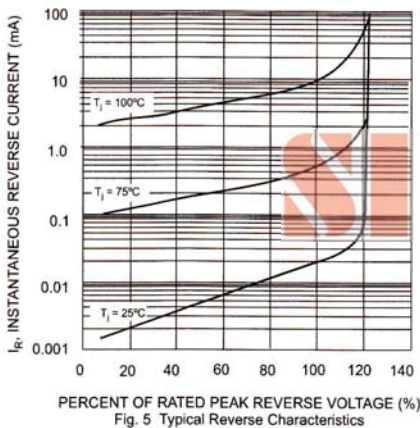


Marking Information

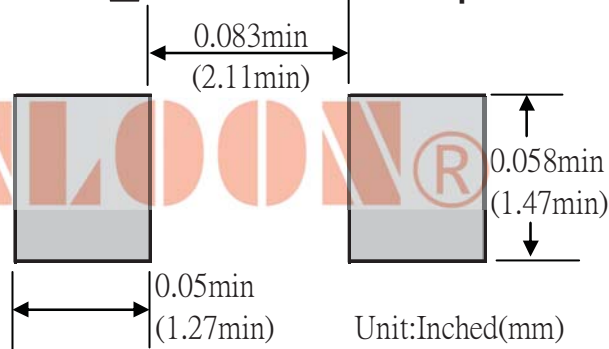
- Cathode = Polarity Band
- SRxx = Device Number
- xx See Page 2
- Polarity = As Marked Body



Maximum Ratings and Electrical Characteristics @ $T_A=25^\circ\text{C}$ unless otherwise specified



Recommended Footprint



□ **Maximum Ratings and Electrical Characteristics** @ $T_A=25^\circ\text{C}$ unless otherwise specified

Characteristics	Symbol	SR 22	SR 23	SR 24	SR 25	SR 26	SR 28	SR 29	SR 100	Unit
Peak Repetitive Reverse Voltage	V_{RRM}									
Working Peak Reverse Voltage	V_{RWM}	20	30	40	50	60	80	90	100	V
DC Blocking Voltage	V_R									
RMS Reverse Voltage	$V_{R(RMS)}$	14	21	28	35	42	56	64	71	V
Average Rectified Output Current @ $T_L=105^\circ\text{C}$	I_O	2.0		2.0		2.0				A
Non-Repetitive Peak Forward Surge Current 8.3ms Single half sine-wave superimposed on rated load (JEDEC Method)	I_{FSM}	50		50		50				A
Forward Voltage @ $I_F=2.0\text{A}$	V_{FM}	0.5		0.7		0.85				V
Peak Reverse Current @ $T_A = 25^\circ\text{C}$	I_{RM}	0.5		0.5		0.5				mA
At Rated DC Blocking Voltage @ $T_A=100^\circ\text{C}$		20.0		20.0		20.0				
Typical Thermal Resistance (Note 1)	$R_{\theta JL}$	20		20		20				$^\circ\text{C/W}$
	$R_{\theta JA}$	75		75		75				
Operating Temperature Range	T_J	-65 to +125								$^\circ\text{C}$
Storage Temperature Range	T_{STG}	-65 to +150								$^\circ\text{C}$

Note 1: Mounted on P.C. Board with 8.0mm^2 copper pad area.

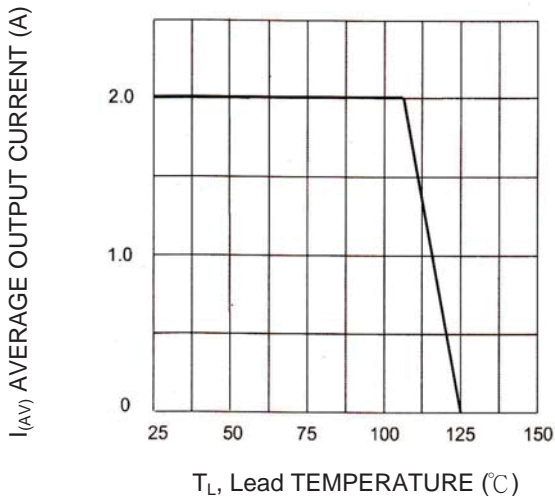


Fig-1 Forward and Current Derating Curve

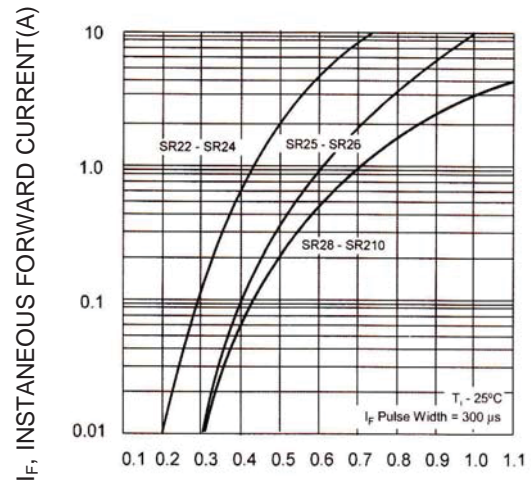


Fig-2 Typical Forward Voltage Characteristics

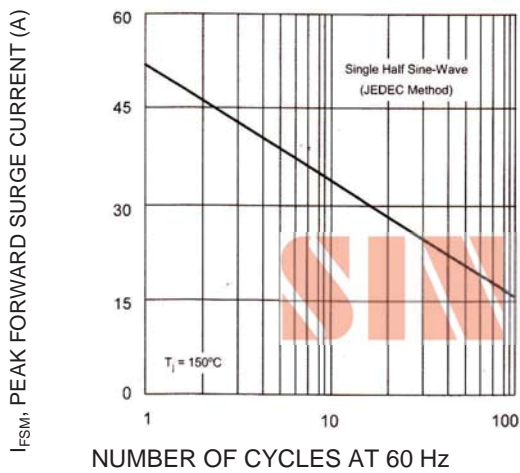


Fig-3 Max Non-Repetitive Peak Forward Surge Current

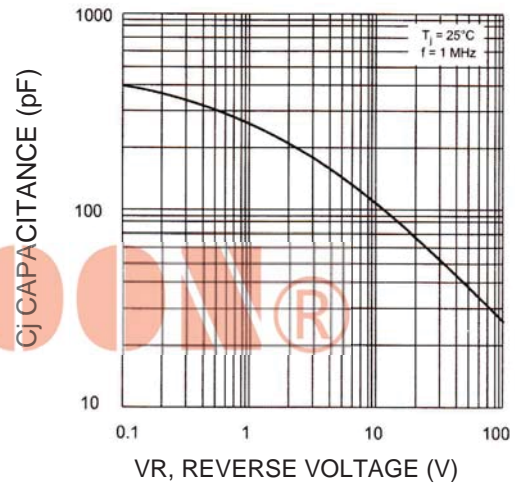


Fig-4 Typical Junction Capacitance

SINLOON®

肖特基二極管

SR22 - SR210 (20V~100V)

Case: SMA/DO-214AC

2.0A Surface Mount Schottky Barrier Diode

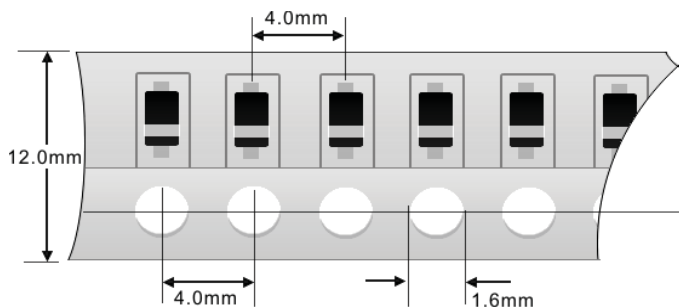
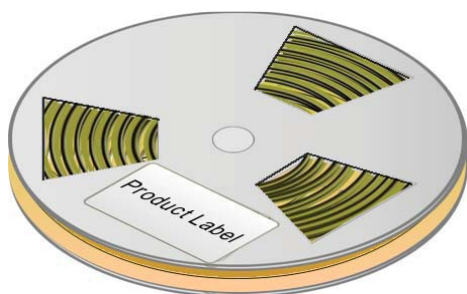
Packaging Information

Dimension Reel Tape	Quantity (Pcs)	Inner Box Size L x W x H	Quantity (Pcs)	Carton Size L x W x H	Quantity (Pcs)	Gross Weight
330 mm	7,500	340 x 337 x 45 mm	15,000	370 x 370 x 420 mm	120,000	17.5Kg

Note: 1. Paper Reel, White or gray color.
2. Components are packed in accordance with EIA standard 481- and 481-2

Tape Reel

330 x 12mm



Carton:



SINLOON®

※美隆公司產品規格及其特性參數的改變或更新恕不另行通知。

※Mayloon characteristic parameters of electronic product specification changes or updates without notice to improve

