

SINLOON®

肖特基穩壓二極管

Case: SMA/DO-214AC

SS12 - S100 (20V~100V)

1.0A SMT Schottky Barrier Diode

Feature

- ◆ Schottky Barrier Diode
- ◆ Guard ring die construction
- ◆ Low Forward Loss, High efficiency
- ◆ For use in low voltage application
- ◆ Surge Overload Rating to 30A Peak
- ◆ Ideally Suited for Automatic Assembly
- ◆ Plastic Case Material has UL Flammability Classification Rating 94V-0)

Figure Case SMA/DO-214AC



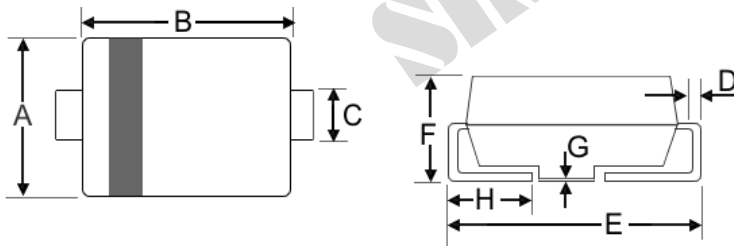
Mechanical Data

- ◆ Case: SMA/DO-214AC, Molded Plastic
- ◆ Mounting : Type Number
- ◆ Weight: 0.064 grams (approx)
- ◆ Polarity: Cathode Band or Cathode Notch
- ◆ Terminals: Solder Plated, Solderable per MIL-STD-750, Method 2026.
- ◆ Lead Free: For **RoHS** / Lead Free Version Add "-LF" Suffix to part Number.

Dimension

Case: SMA/DO-214AC (mm)

Dim	Min	Max
A	2.5	2.9
B	4.0	4.6
C	1.2	1.6
D	0.152	0.305
E	4.8	5.28
F	2.0	2.44
G	0.051	0.203
H	0.76	1.52

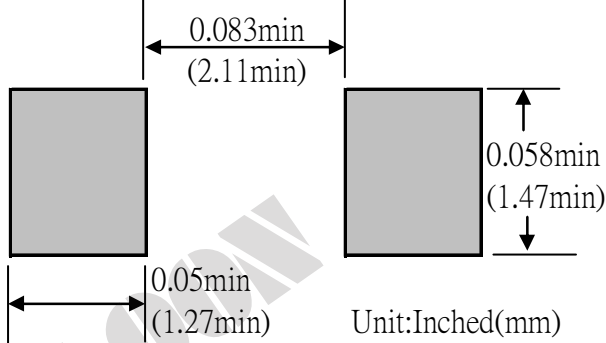


Marking Information

- Cathode = Polarity Band
- SSxx = Device Number
- xx = See Page 2
- Polarity = As Marked Body



Recommended Footprint



SINLOON®

肖特基穩壓二極管

Case: SMA/DO-214AC

SS12 - S100 (20V~100V)

1.0A SMT Schottly Barrier Diode

□ Maximum Ratings and Electrical Characteristics @ $T_A=25^\circ\text{C}$ unless otherwise specified

Characteristics	Symbol	SS	SS	SS	SS	SS	SS	SS	SS	Unit	
		12	13	14	15	16	18	19	100		
Peak Repetitive Reverse Voltage	V_{RRM}									V	
Working Peak Reverse Voltage	V_{RWM}	20	30	40	50	60	80	90	100		
DC Blocking Voltage	V_R										
RMS Reverse Voltage	$V_{R(RMS)}$	14	21	28	35	42	56	64	71	V	
Average Rectified Output Current @ $T_L=75^\circ\text{C}$	I_O	1.0			1.0			1.0			A
Non-Repetitive Peak Forward Surge Current 8.3ms Single half sine-wave superimposed on rated load (JEDEC Method)	I_{FSM}	30			30			30			A
Forward Voltage @ $I_F=1.0\text{A}$	V_{FM}	0.5			0.7			0.85			V
Peak Reverse Current @ $T_A = 25^\circ\text{C}$	I_{RM}	0.5			0.5			0.5			mA
At Rated DC Blocking Voltage @ $T_A=125^\circ\text{C}$		20			20			20			
Typical Thermal Resistance (Note 1)	$R_{\theta JL}$	25			28			28			pF
	$R_{\theta JA}$	88			88			88			$^\circ\text{C/W}$
Operating Temperature Range	T_j	-65 to +150									$^\circ\text{C}$
Storage Temperature Range	T_{STG}	-65 to +150									$^\circ\text{C}$

Note : 1). Mounted on P.C. Board with 5.0mm^2 copper pad area.

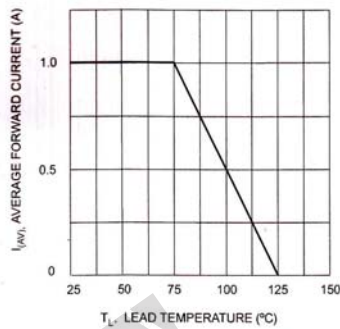


Fig. 1 Forward Current Derating Curve

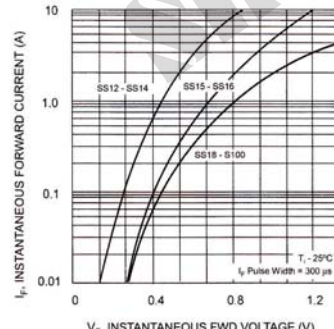


Fig. 2 Typ. Forward Characteristics

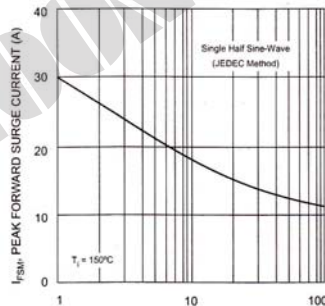


Fig. 3 Max Non-Repetitive Peak Fwd Surge Current

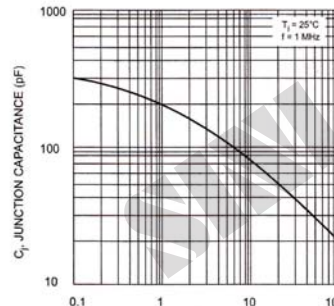


Fig. 4 Typical Junction Capacitance

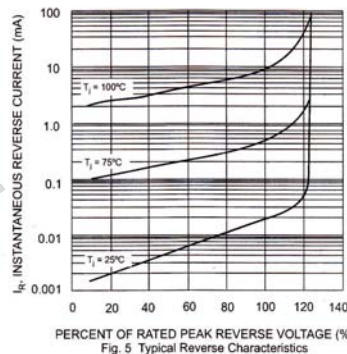


Fig. 5 Typical Reverse Characteristics

SINLOON®

肖特基穩壓二極管

Case: SMA/DO-214AC

GS12 - S100 (20V~100V)

1.0A SMT Schottky Barrier Diode

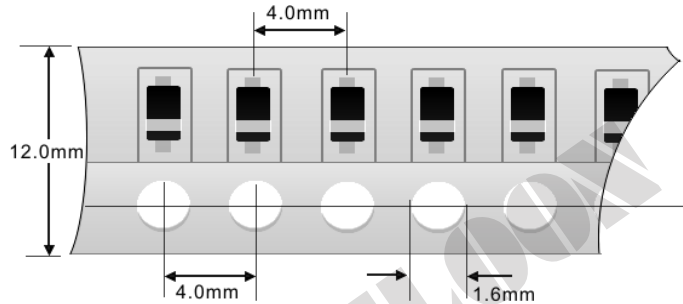
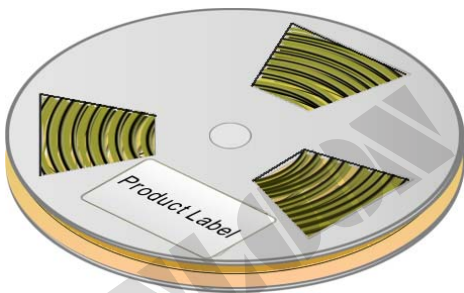
Packaging Information

Dimension Reel Tape	Quantity (Pcs)	Inner Box Size L x W x H	Quantity (Pcs)	Carton Size L x W x H	Quantity (Pcs)	Gross Weight
330 mm	7,500	340 x 337 x 45 mm	15,000	370 x 370 x 420 mm	120,000	17.5kg

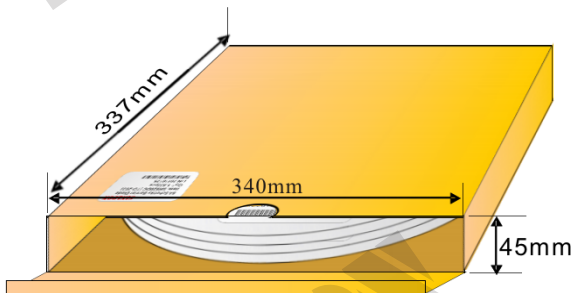
Note: 1. Paper Reel, White or gray color.
2. Components are packed in accordance with EIA standard 481- and 481-2

Tape Reel

330 x 12mm



Inner Box



Carton:



※美隆公司產品規格及其特性參數的改變或更新恕不另行通知。

※Mayloon characteristic parameters of electronic product specification changes or updates without notice to improve